

# East Area Planning Committee Presentation

20/02983/FUL

John Radcliffe Hospital

[www.oxford.gov.uk](http://www.oxford.gov.uk)



# Site Location Plan



[www.oxford.gov.uk](http://www.oxford.gov.uk)



# Application site from the North West

[www.oxford.gov.uk](http://www.oxford.gov.uk)



5





# Demolition works which have taken place

[www.oxford.gov.uk](http://www.oxford.gov.uk)



# View from the North

7



[www.oxford.gov.uk](http://www.oxford.gov.uk)





# View from the East towards the Main JR Building

[www.oxford.gov.uk](http://www.oxford.gov.uk)



# View from the South

[www.oxford.gov.uk](http://www.oxford.gov.uk)





# Longer range views from the North

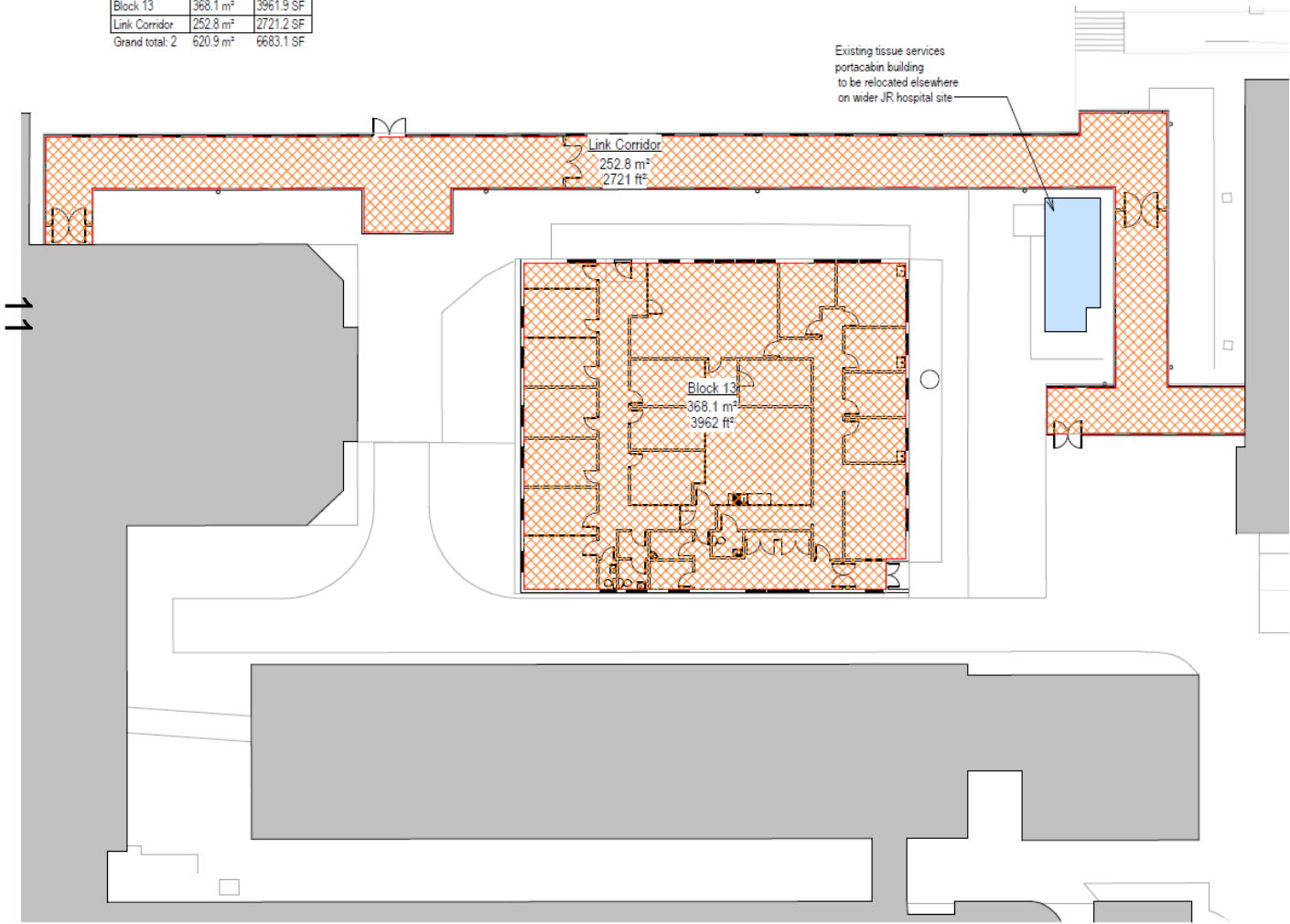
[www.oxford.gov.uk](http://www.oxford.gov.uk)





# Existing Site Plan

Existing GIA for Demolition		
Name	Area	Area ft
Block 13	368.1 m <sup>2</sup>	3961.9 SF
Link Corridor	252.8 m <sup>2</sup>	2721.2 SF
Grand total: 2	620.9 m <sup>2</sup>	6683.1 SF



# Proposed Site Plan/Level 1 Plan

[www.oxford.gov.uk](http://www.oxford.gov.uk)



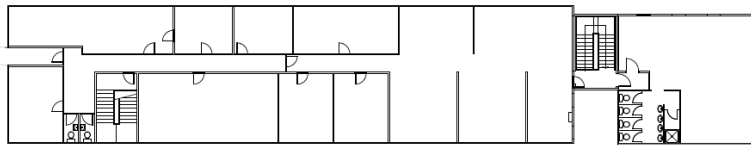
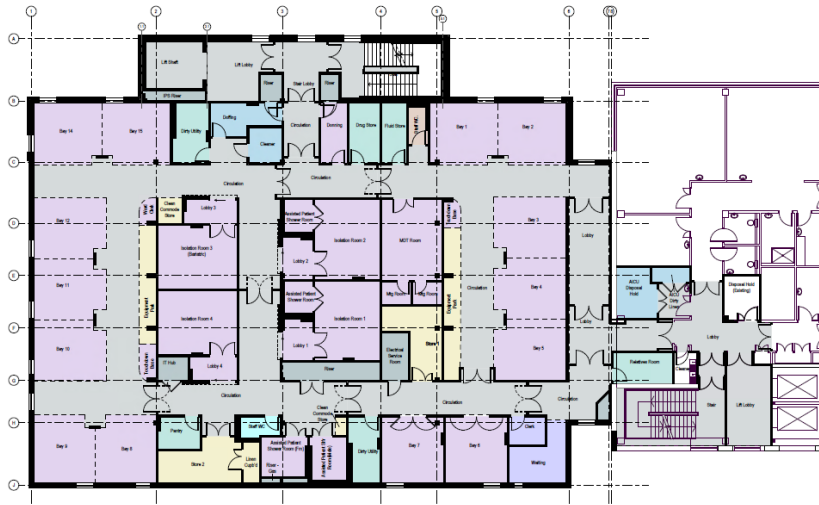


# Proposed Level 2 and 3 Plans

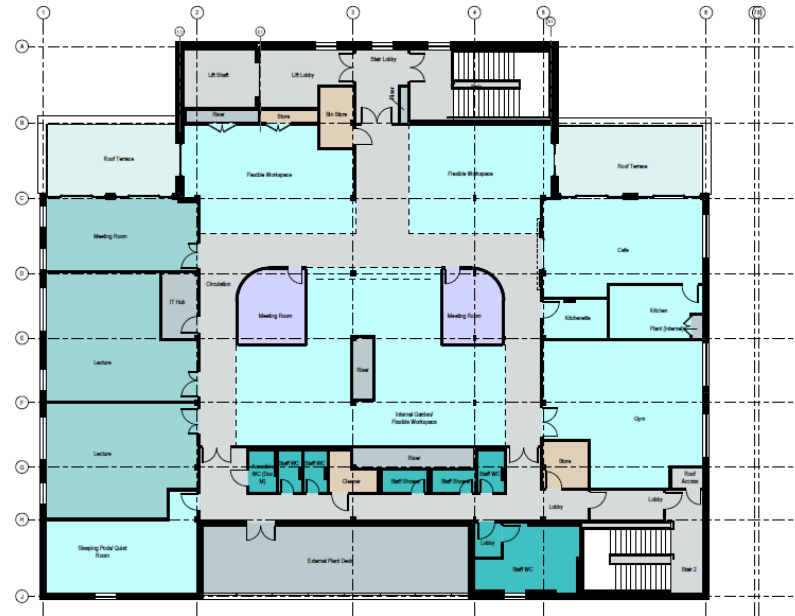
[www.oxford.gov.uk](http://www.oxford.gov.uk)



13

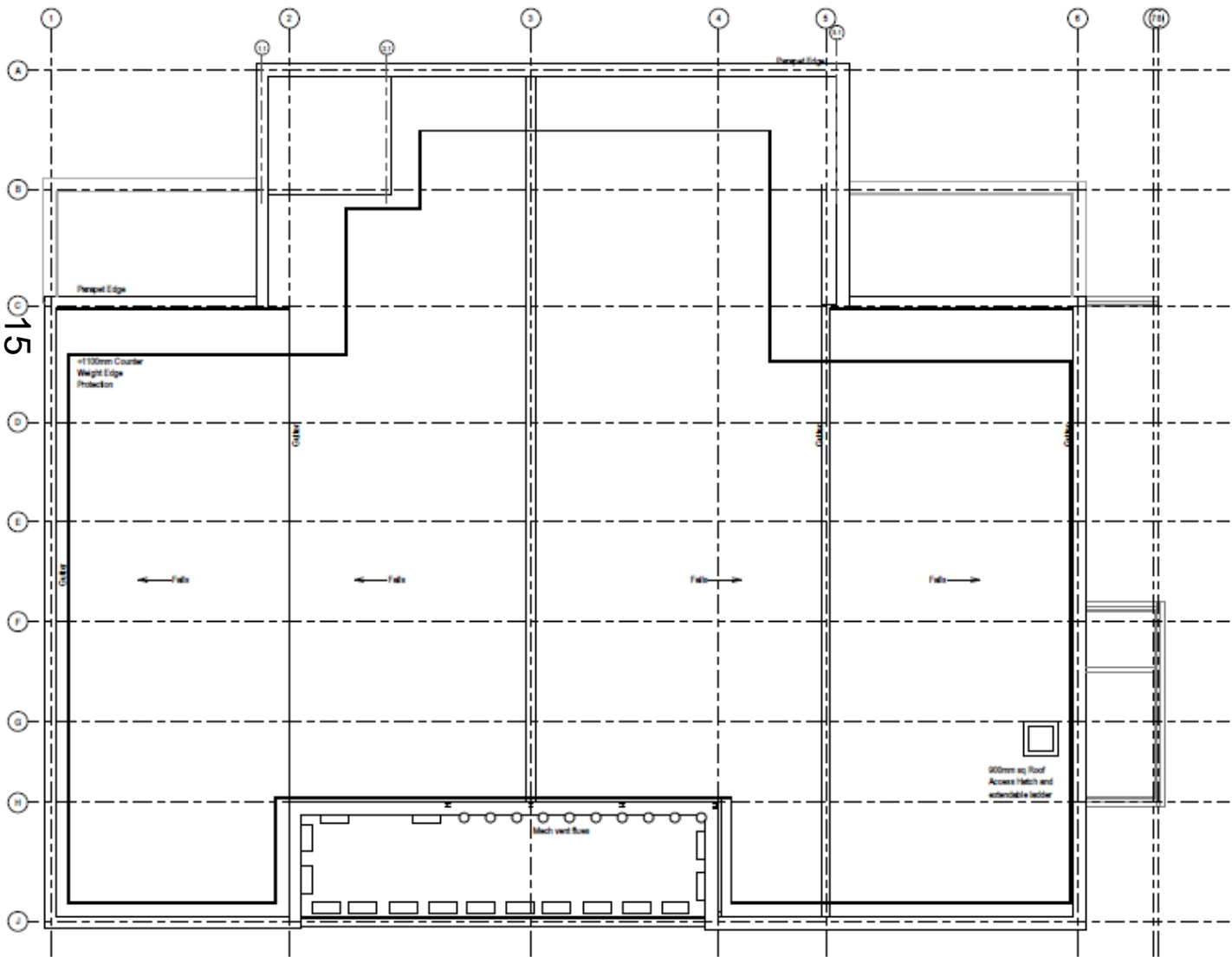


**www.oxford.gov.uk**

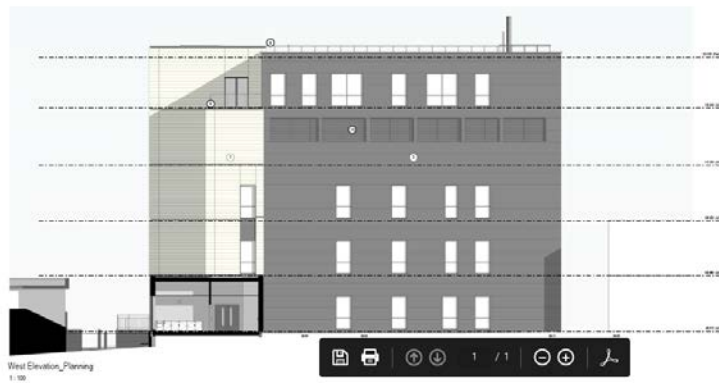
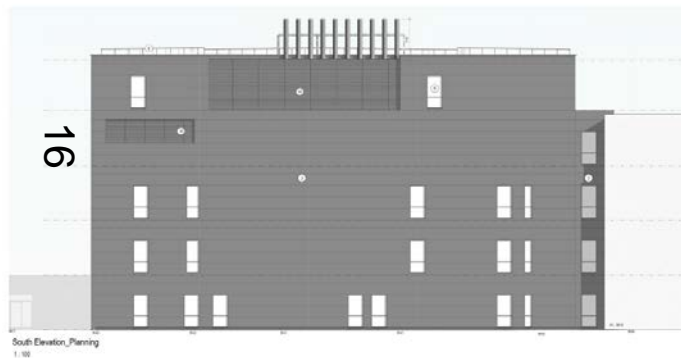




# Proposed Roof Plan



# Proposed Elevations



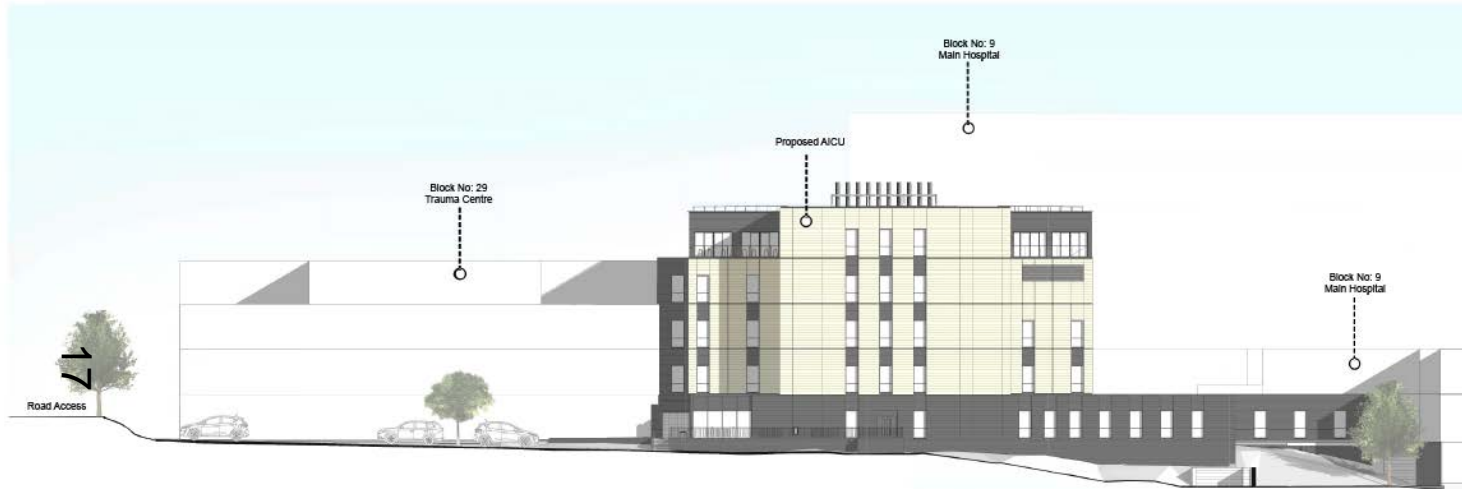
[www.oxford.gov.uk](http://www.oxford.gov.uk)





# Proposed Contextual Elevations

[www.oxford.gov.uk](http://www.oxford.gov.uk)



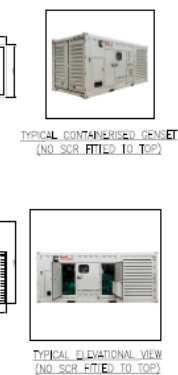
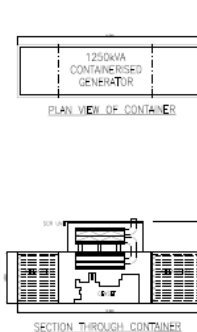
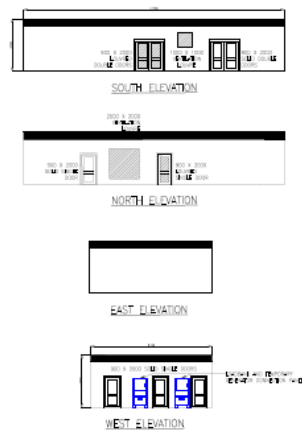
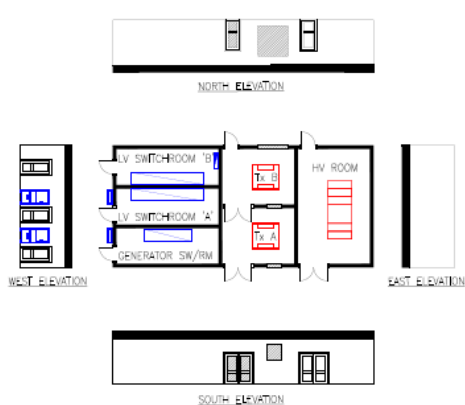
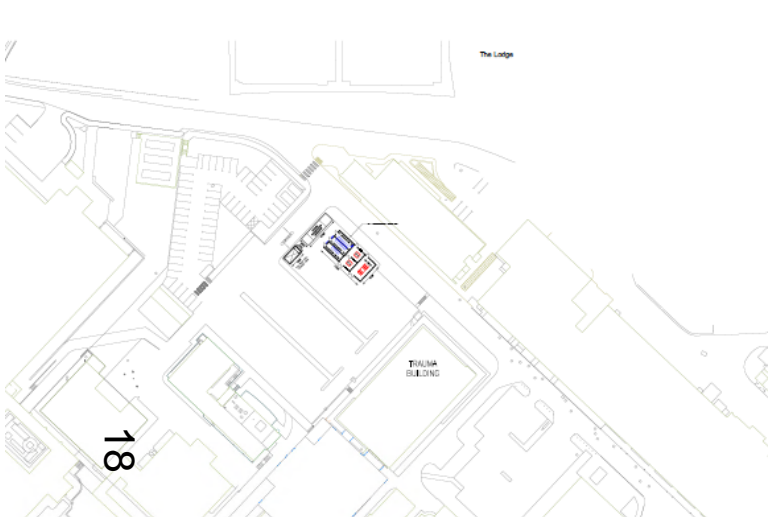
Section CC  
1: 200



Section DD  
1: 200



# Proposed Substation Plans and Elevations



# Proposed Visual

[www.oxford.gov.uk](http://www.oxford.gov.uk)





This page is intentionally left blank